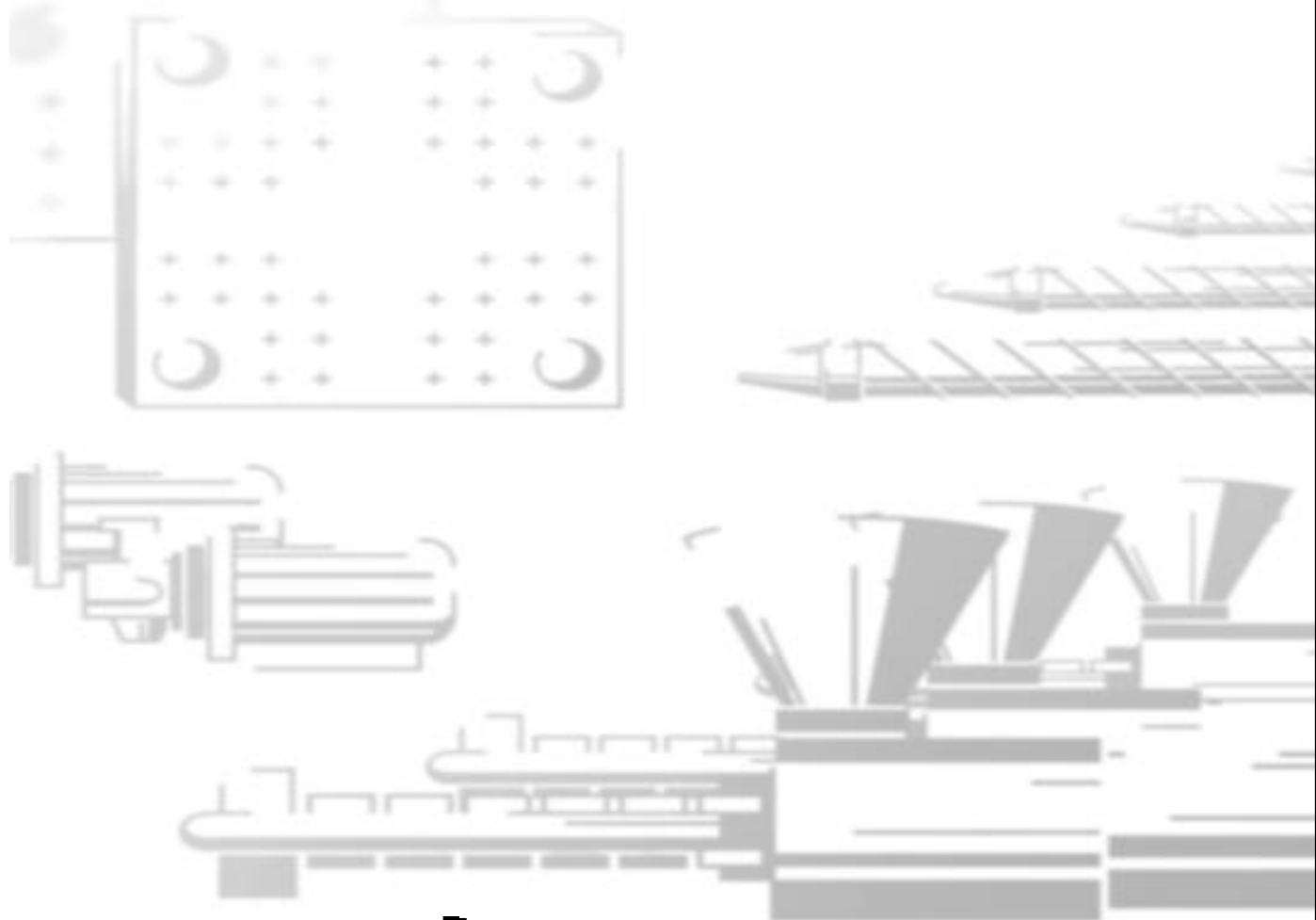


# Extra

250 - 2.000 kN

Technical Description



**Demag** *Plastics Group*

**T E C H N I C A L D E S C R I P T I O N**

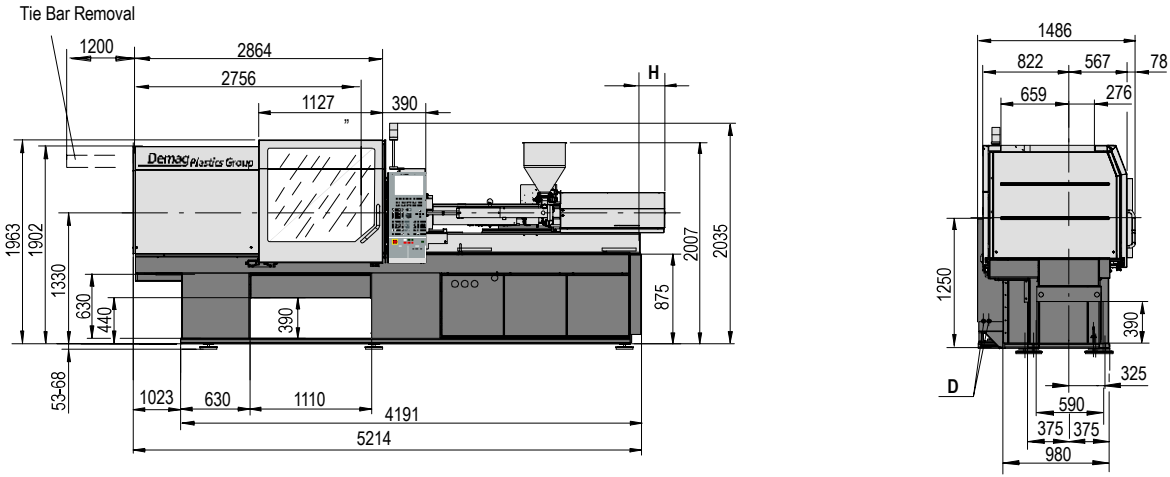
# Technical Data Extra 160

Demag Plastics Group		Extra 160					
Model description		Extra 160-430			Extra 160-600		
International size description		1600-430			1600-600		
<b>Clamping unit</b>		<b>160</b>					
Clamping force	[kN]	1600					
Locking force	[kN]	1760					
Max. mould opening stroke	[mm]	500					
Reduced mould height	[mm]	275					
Max. mould height	[mm]	585/685					
Overall size of platens	[mm]	1085/1185					
Mould platen (h x v)	[mm]	770x770					
Distance between tie bars (h x v)	[mm]	520x520					
Ejection stroke	[mm]	160					
Ejection force	[kN]	59					
Retraction force	[kN]	29					
<b>Injection unit</b>		<b>430</b>			<b>600</b>		
Screw diameter	[mm]	35	40	45	40	45	50
L/D ratio		20	20	20	20	20	20
Injection pressure (up to 400 °C)	[bar]	2640	2020	1600	2420	1910	1550
Cylinder head volume	[cm <sup>3</sup> ]	168	231	293	231	323	399
Max. shot weight (PS, PE*)	[g]	149	205	259	208	291	359
<b>Rate of injection</b>							
> without accumulator	[cm <sup>3</sup> /s]	142	185	234	155	196	242
> with accumulator	[cm <sup>3</sup> /s]	-	-	-	-	-	-
<b>Plasticising rate (PS)</b>							
> motor 1 (120 bar)	[g/s]	28,0	39,0	52,0	21,0	29,0	40,0
> motor 2 (120 bar)	[g/s]	22,0	31,0	42,0	17,0	23,0	31,0
Max. screw stroke	[mm]	175	184	184	184	203	203
Max. distance of nozzle retraction	[mm]		300			300	
Max. nozzle dipping depth (SVO)	[mm]		20			20	
Nozzle sealing force	[kN]		60			60	
Number of heating zones		4	4	4	4	4	5
Hopper capacity	[ltr.]		35			50	
<b>General data</b>		<b>160-430</b>			<b>160-600</b>		
Oil tank capacity	[ltr.]	220			220		
<b>Installed electrical rating</b>							
> pump unit	[kW]	22			22		
> heating capacity of screw cylinder	[≈ kW]	9,4	11,1	11,3	11,1	11,3	15,7
> total	[≈ kW]	31	33	33	33	33	38
Dry cycles (Euromap 6)	[s-mm]	2,05-350			2,05-350		
Net weight (without oil)	[≈ kg]	6350			6400		
Machine dimensions (l x w x h)	[≈ mm]	5,3x1,5x2,0			5,3x1,5x2,0		
Electric drive projection (H) <sup>1)</sup>	[mm]	0/0	0/0	0/51	0/0	0/133	0/272

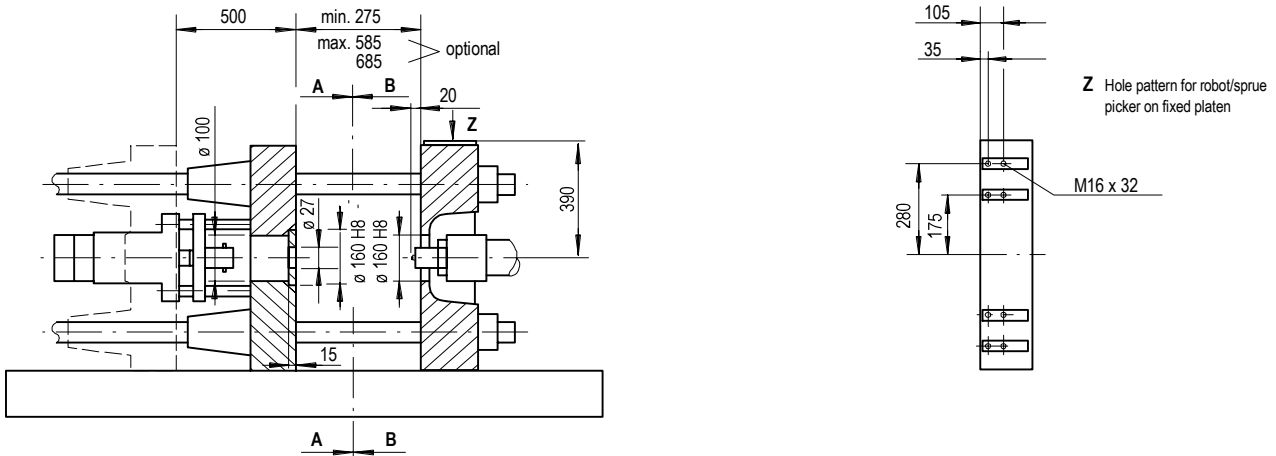
We reserve the right to make changes as a result of further technical advantages  
Plasticising rate depends on processing conditions and material employed

1) valve contact/valve disengage

**Machine dimensions Extra 160**



**Platen dimensions Extra 160**

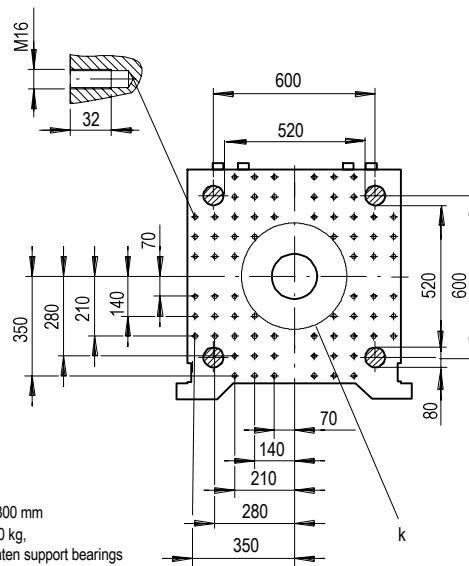
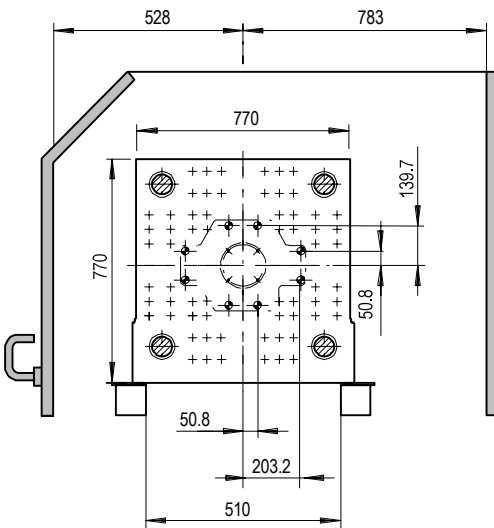


Moving platen

**B - B**

Fixed platen

**A - A**



Hole pattern according Euromap  
 k = minimum permissible mould-Ø 300 mm  
 Max. permissible mould weight 1700 kg,  
 max. 1150 kg of it on the moving platen support bearings  
 ⊕ bore diameter Ø 27 through holes