

Spritzgiessautomaten

## 1.1 Technical data



**Machine model** 80 M, 80 A, 80T2  
International size 805-308

### Clamping unit

Clamping force	kN	804,5		
Mould closing force	kN	32,5		
Mould opening force	kN	60,3		
Mould opening stroke, max.	mm	430		
Maximum plate distance	mm	680		
Minimum plate distance	mm	250		
Clear width between tie bars	mm	410 x 358 (h x v)		
Diameter tie bar	mm	60		
Ejector force pushing / pulling	kN	18,1 / 12	(38 / 26,7)	
Ejector stroke	mm	130	(150)	
Size of platens	mm	560 x 560		

### Injection unit

Screw diameter	mm	36	42	48
Screw-LD ratio	—	23	20	17
Flight depth ratio	—	2,25	2,24	2,30
Spec. injection pressure	bar	2085	1532	1173
Theor. stroke volume	ccm	147,6	200,9	262,4
Injection weight with polystyrene (1)	g	132	179	234
Plasticising rate	g/s	22 (6)	39 (7)	36 (8)
Injection rate	g/s	125,8	169,8	218,1
Injection force	kN	212,3		
Screw stroke	mm	145		
Screw torque	Nm	630 (3)	540 (4)	470 (5)
Screw speed	1/min	10-310 (3)	10-360 (4)	10-415 (5)
Screw retraction force	kN	46,2		
Nozzle pressure force	kN	65,3		
Nozzle stroke	mm	250		
Heating capacity (2)	W	3 x 3205 + 520 + 250		
Hopper capacity	L	58		

### General

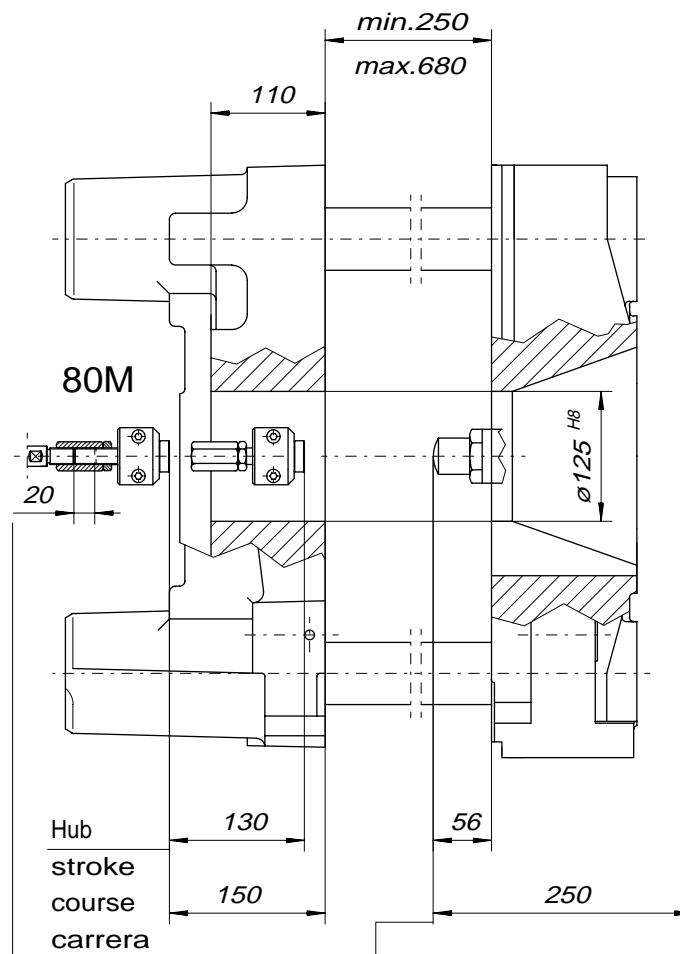
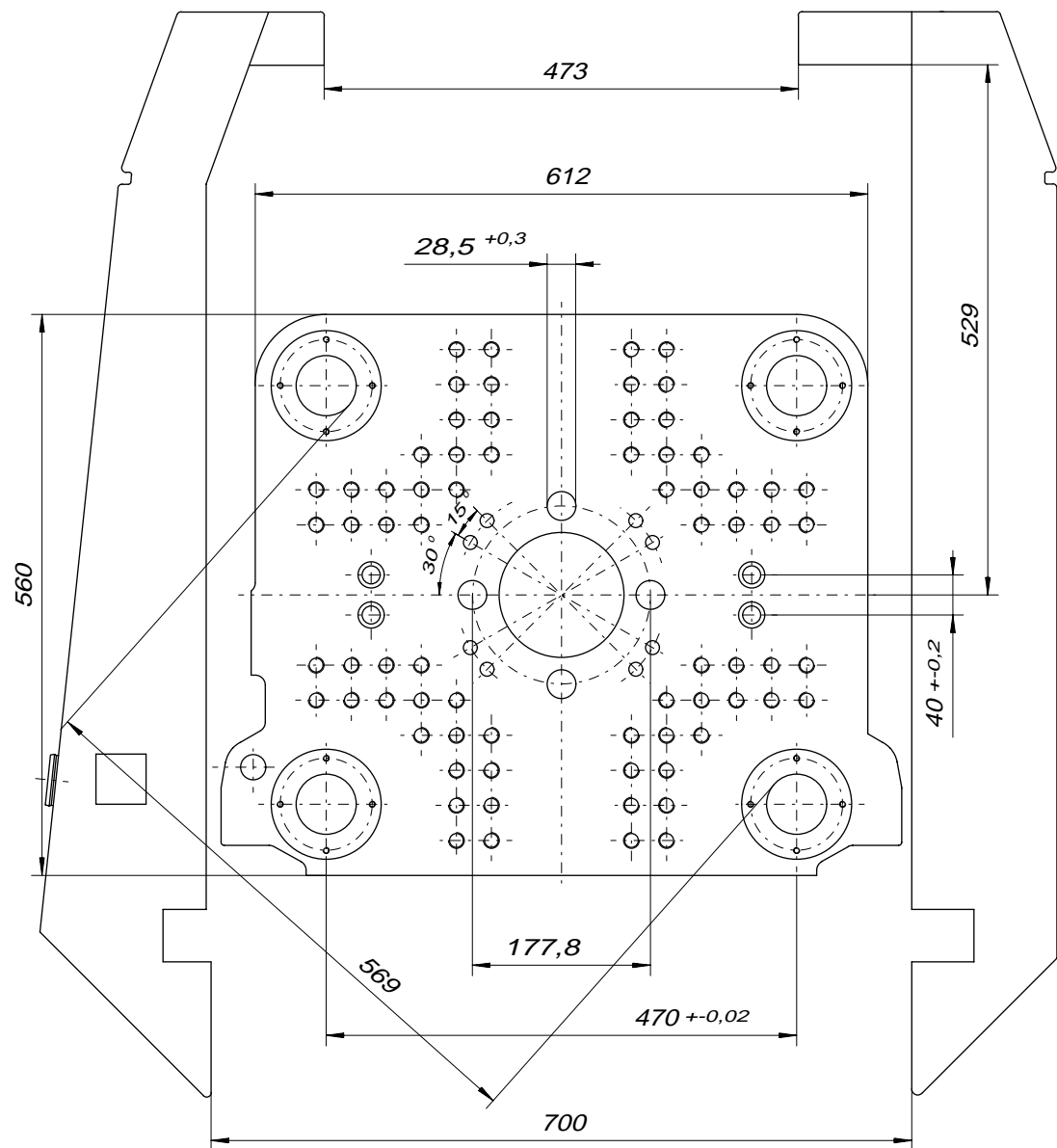
Number of drycycles (Euromap)	1/min	32		
Installed driving power	kW	15		
Installed total power (2)	kW	25,4		
Hydraulic system pressure max./min.	bar	160 / 11		
Oil tank capacity	L	290		

### Dimensions and weights

Length of machine	mm	4145		
Width of machine	mm	1214		
Height of machine	mm	2075		
Floor area	m <sup>2</sup>	5,1		
Total weight net (without oil)	kg	3250		
Total weight gross (without oil)	kg	3630		
Mould cooling connection	—	R 1/2"		
Oil cooling connection	—	R 3/4"		
Resounding power level	dB (A)	83,6 (9)		

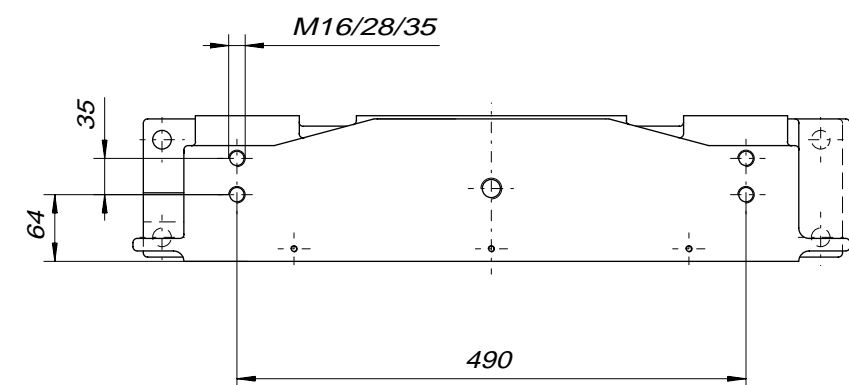
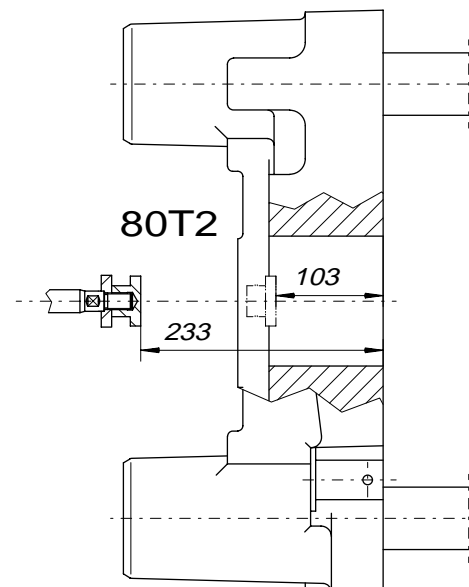
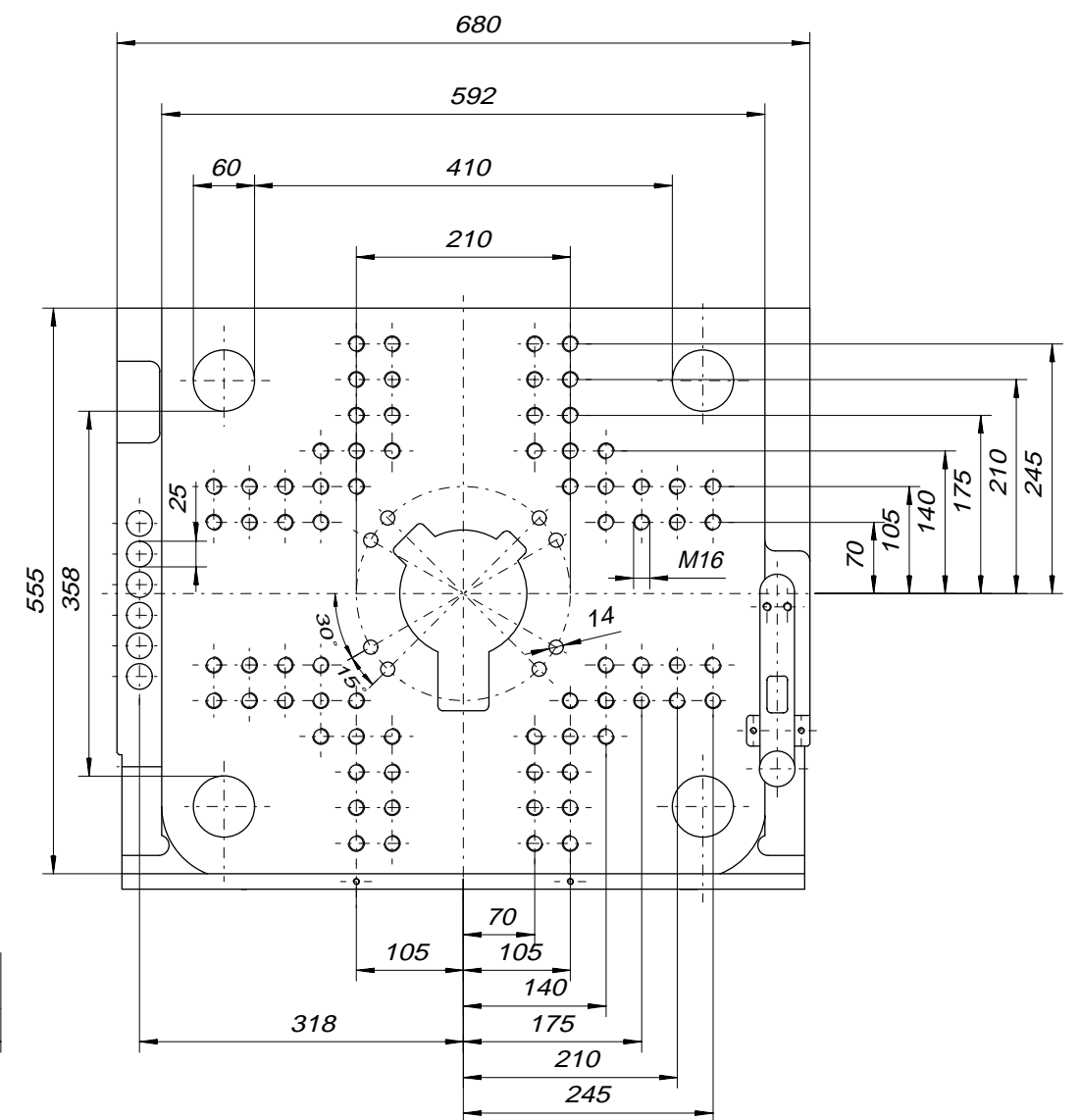
- (1) Theor. stroke volume x 0,91  
 (2) Standard barrel  
 (3) 630 Nm, 310 rpm – 348 ccm Motor, 160 bar / continuous  
 (4) 540 Nm, 360 rpm – 300 ccm Motor, 160 bar / continuous  
 (5) 470 Nm, 415 rpm – 261 ccm Motor, 160 bar / continuous

- (6) Values at 350 rpm  
 (7) Values at 360 rpm  
 (8) Values at 330 rpm  
 (9) DIN 45635



Verstellbereich  
adjustable range  
distance a adjuster  
distancia regulable

Düsenhub  
nozzle stroke  
course de buse  
carrera de boquilla



**BOY 80M, 80 T2**

155041-0 c